

# KŌST



---

**2227**

Timber Mill, Ford Plantation, Stoodleigh

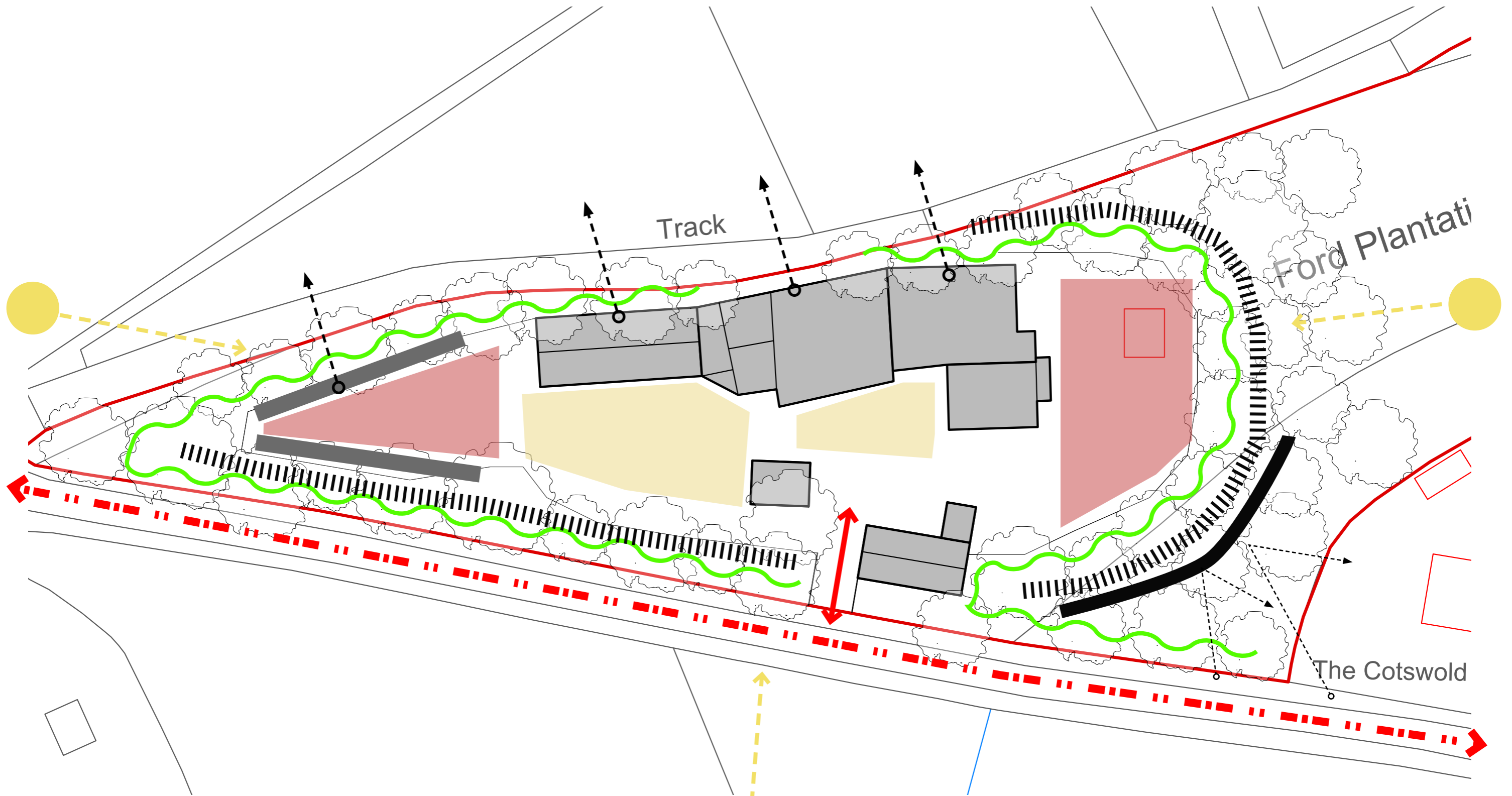
---

# 1.0

## Concept diagrams

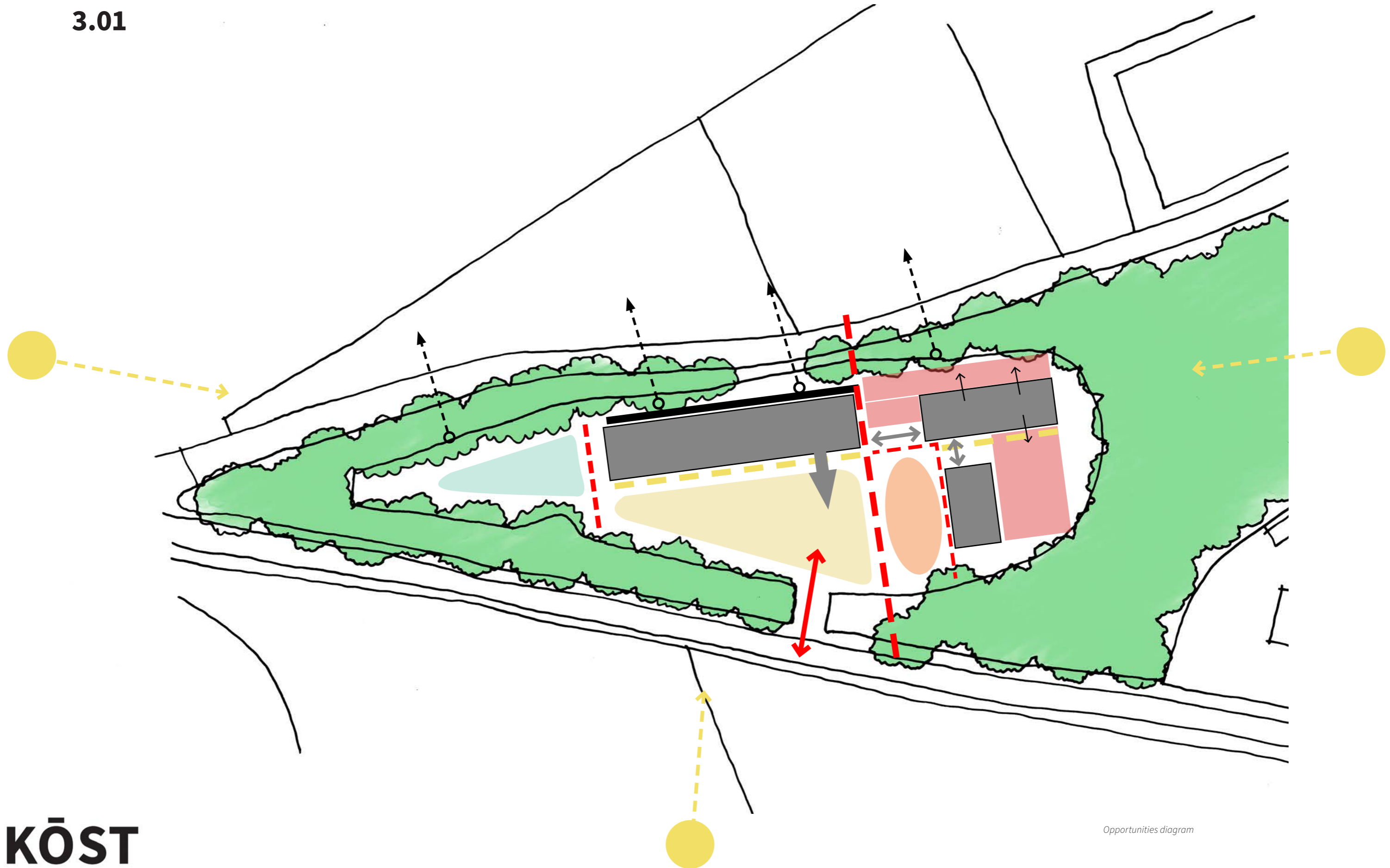
---

- 1.01 Constraints
- 1.02 Opportunities
- 1.03 Concept massing



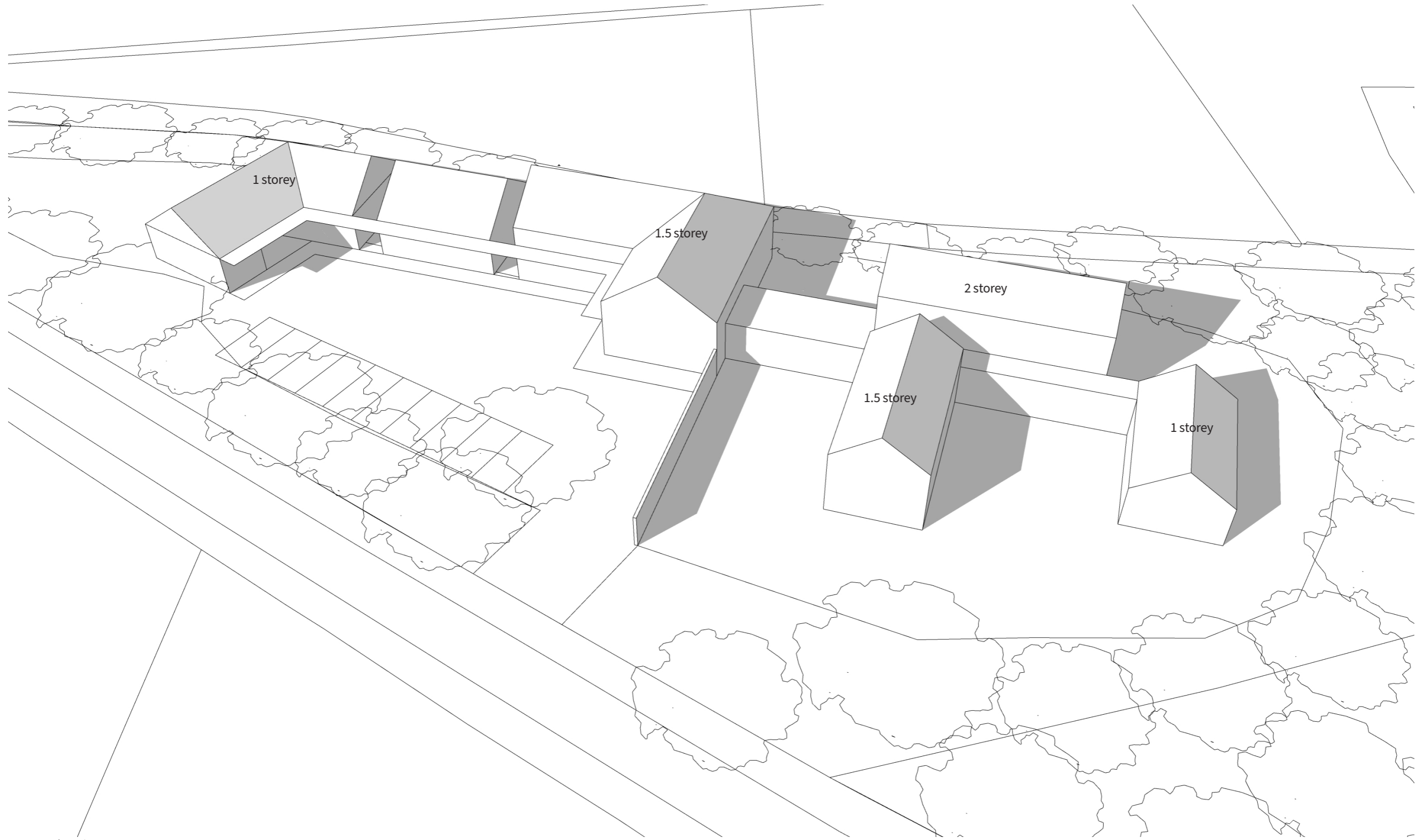
Constraints diagram

3.01



**KÖST**

*Opportunities diagram*



Overview of initial massing

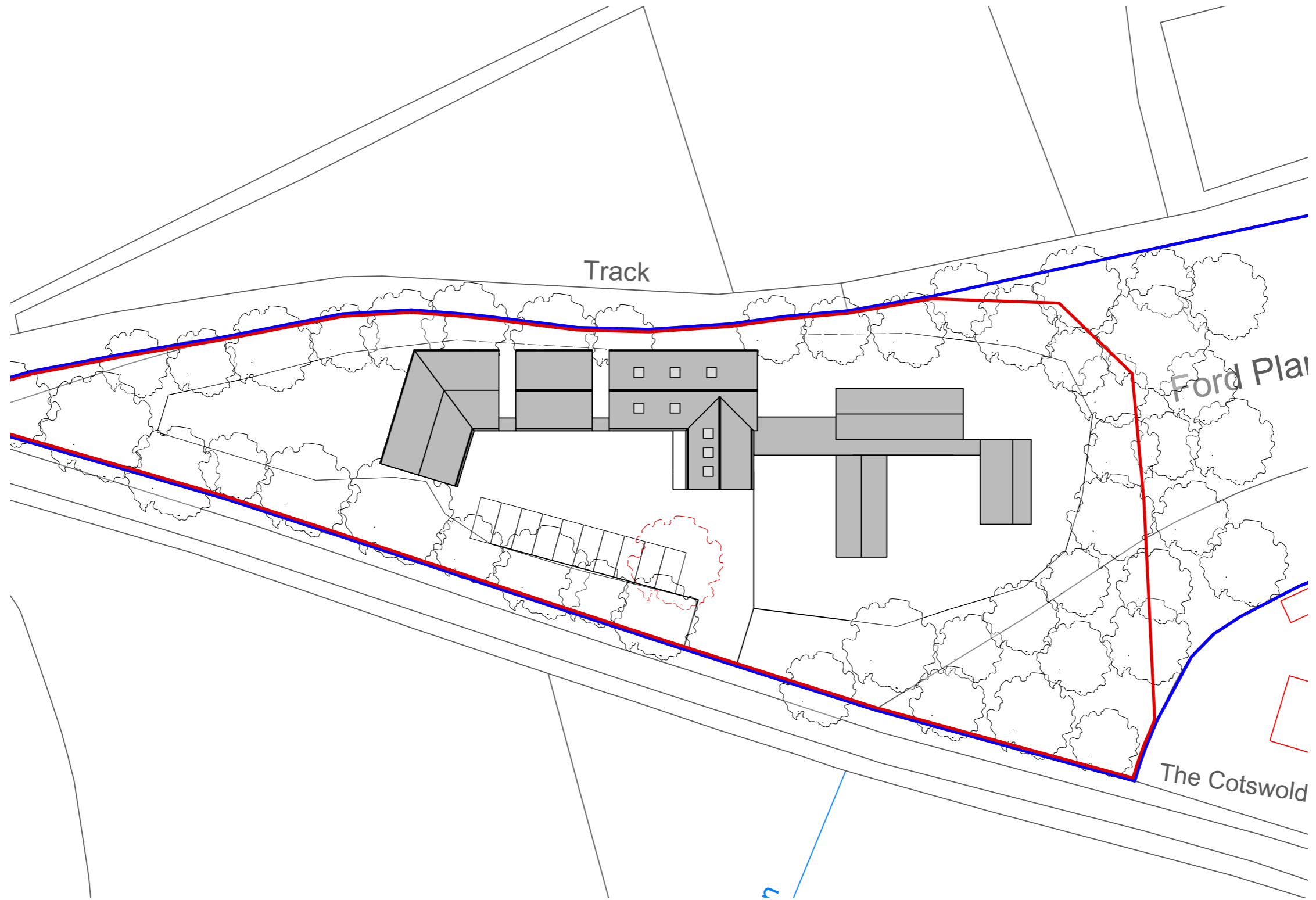
---

## 2.0

# Proposed plans

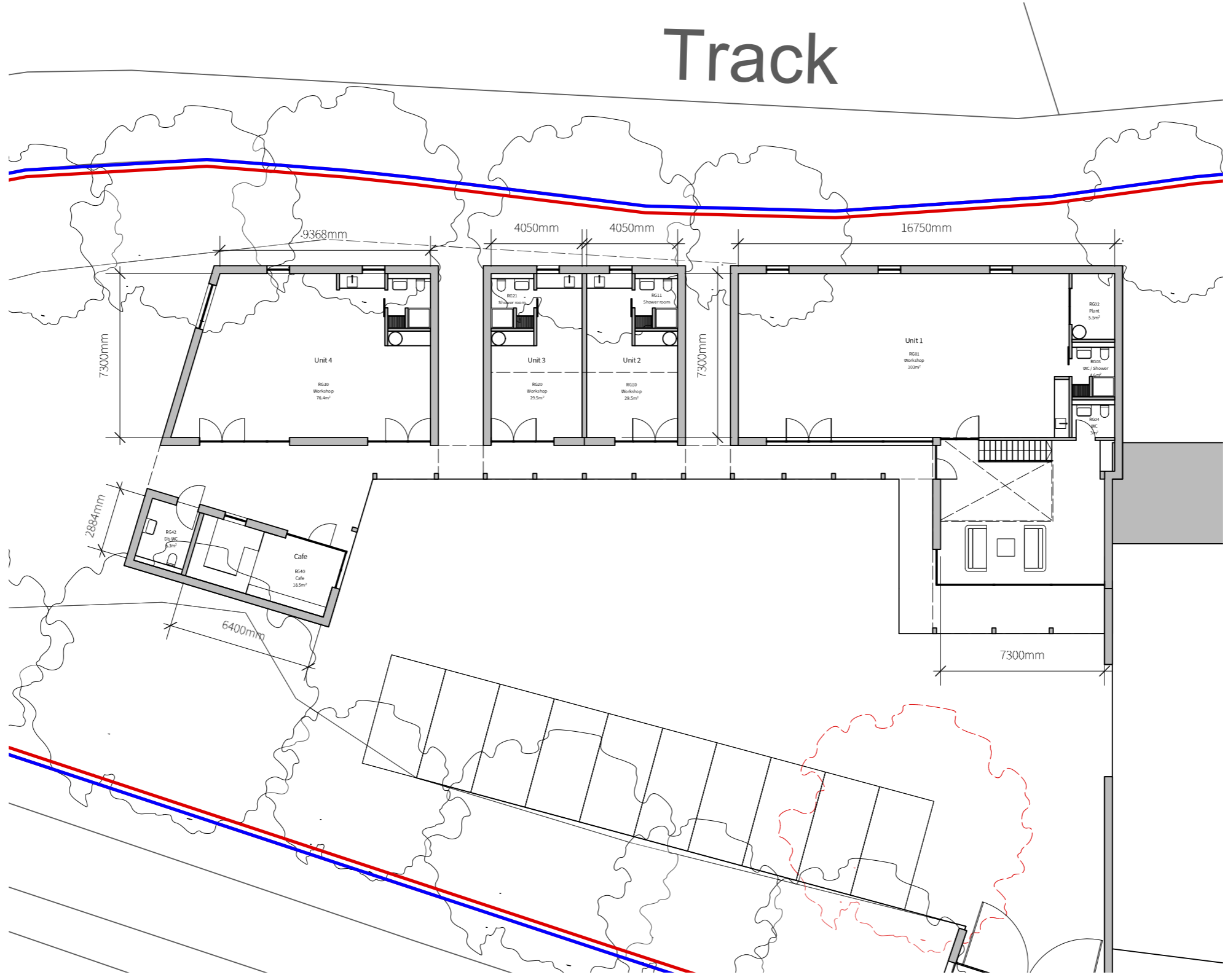
---

- 2.01 Proposed site plan
- 2.02 Proposed workshop plans
- 2.03 Unit 1 Ground floor plan
- 2.04 Unit 1 First floor plan



Proposed site plan

# Track



**Unit areas**

Unit 1  
 Ground floor - 171m2  
 First floor - 179m2  
 Total area - 350m2

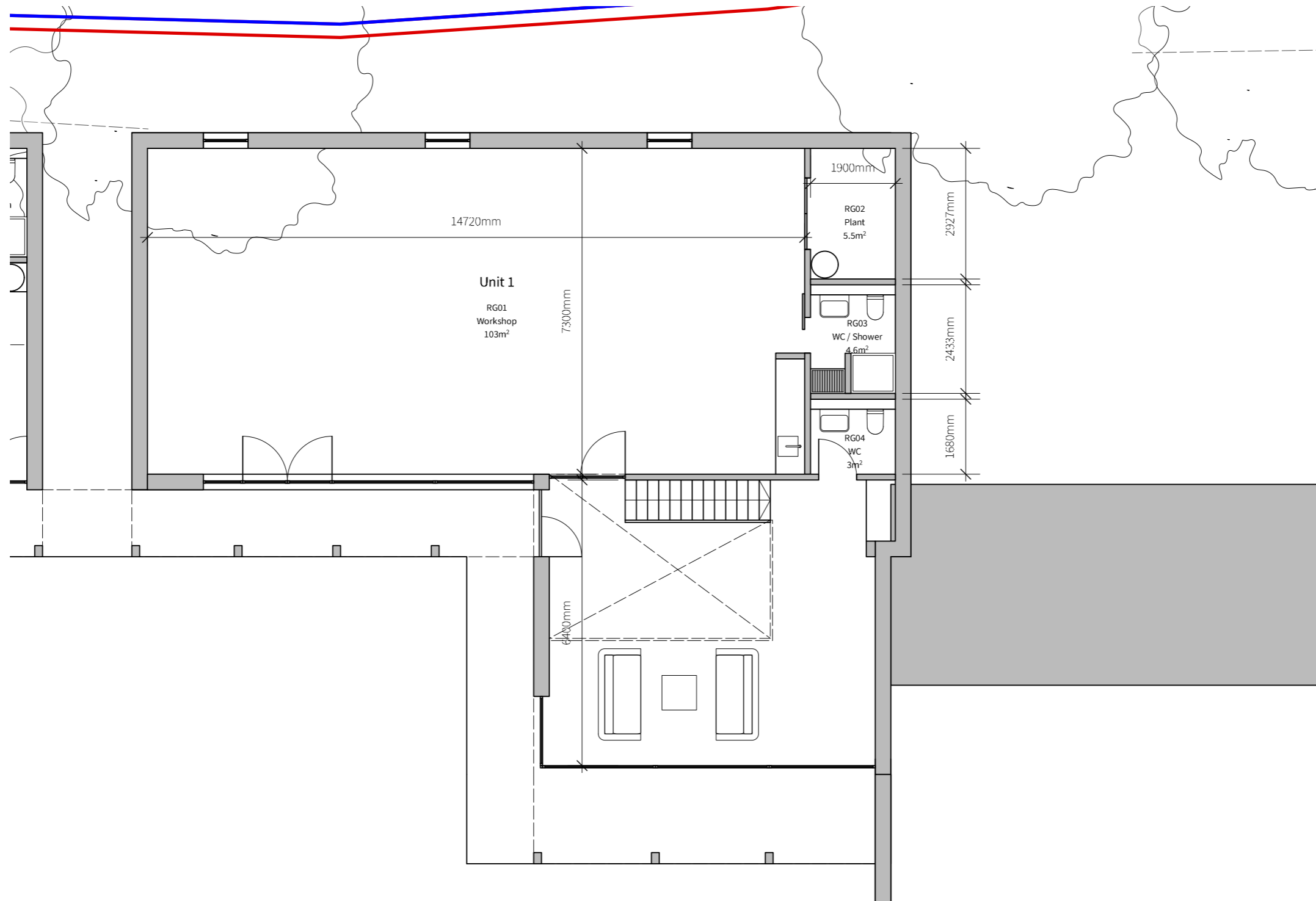
Unit 2 - 30m2  
 Unit 3 - 30m2  
 Unit 4 - 76m2  
 Cafe and toilet - 25m2

**Cost @ £2000/m2**

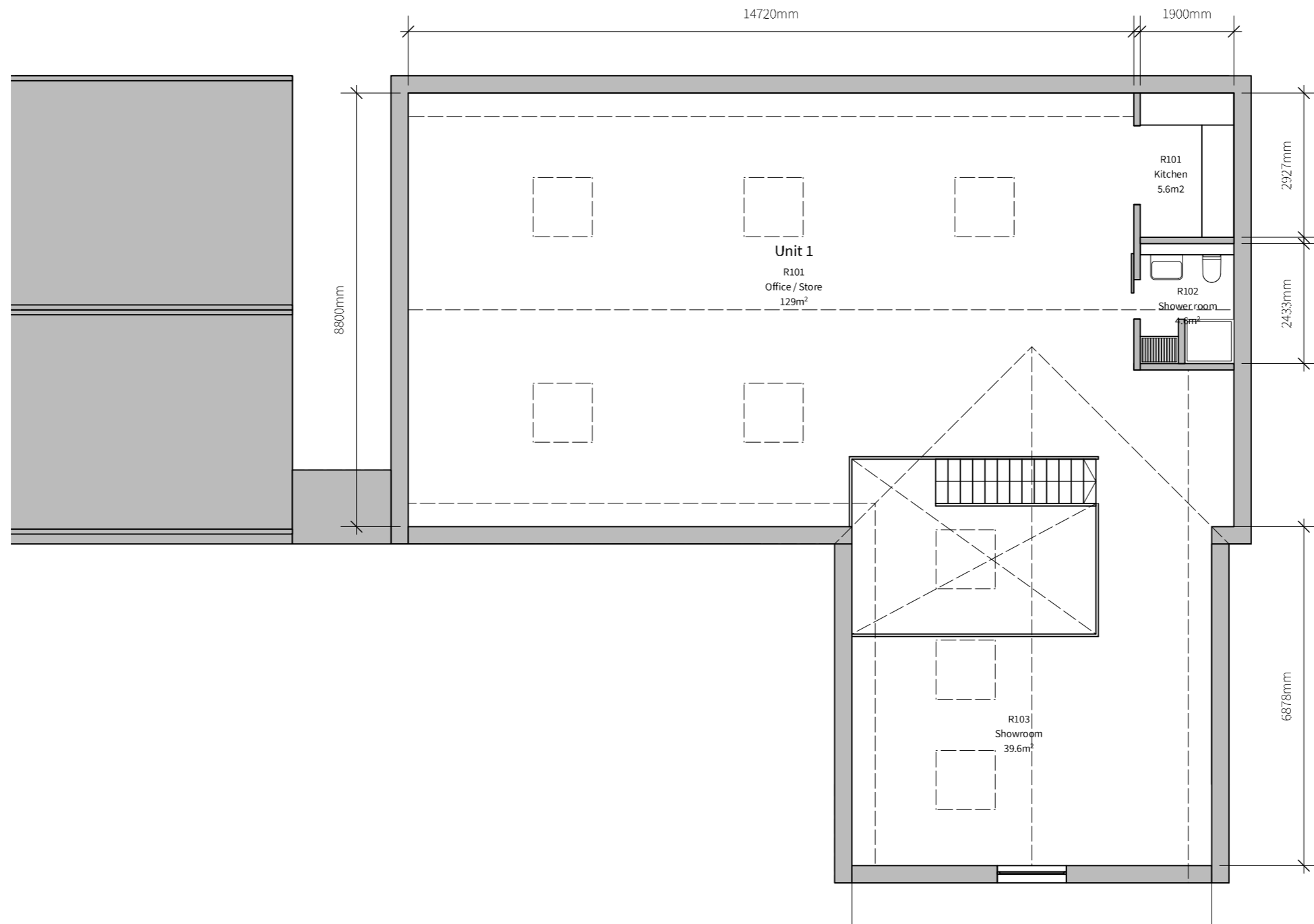
Unit 1 - £700k  
 Unit 2 - £60k  
 Unit 3 - £60k  
 Unit 4 - £152K  
 Cafe and toilet - £50K

Proposed workshop plans





Unit 1 ground floor plan



Unit 1 First floor plan

---

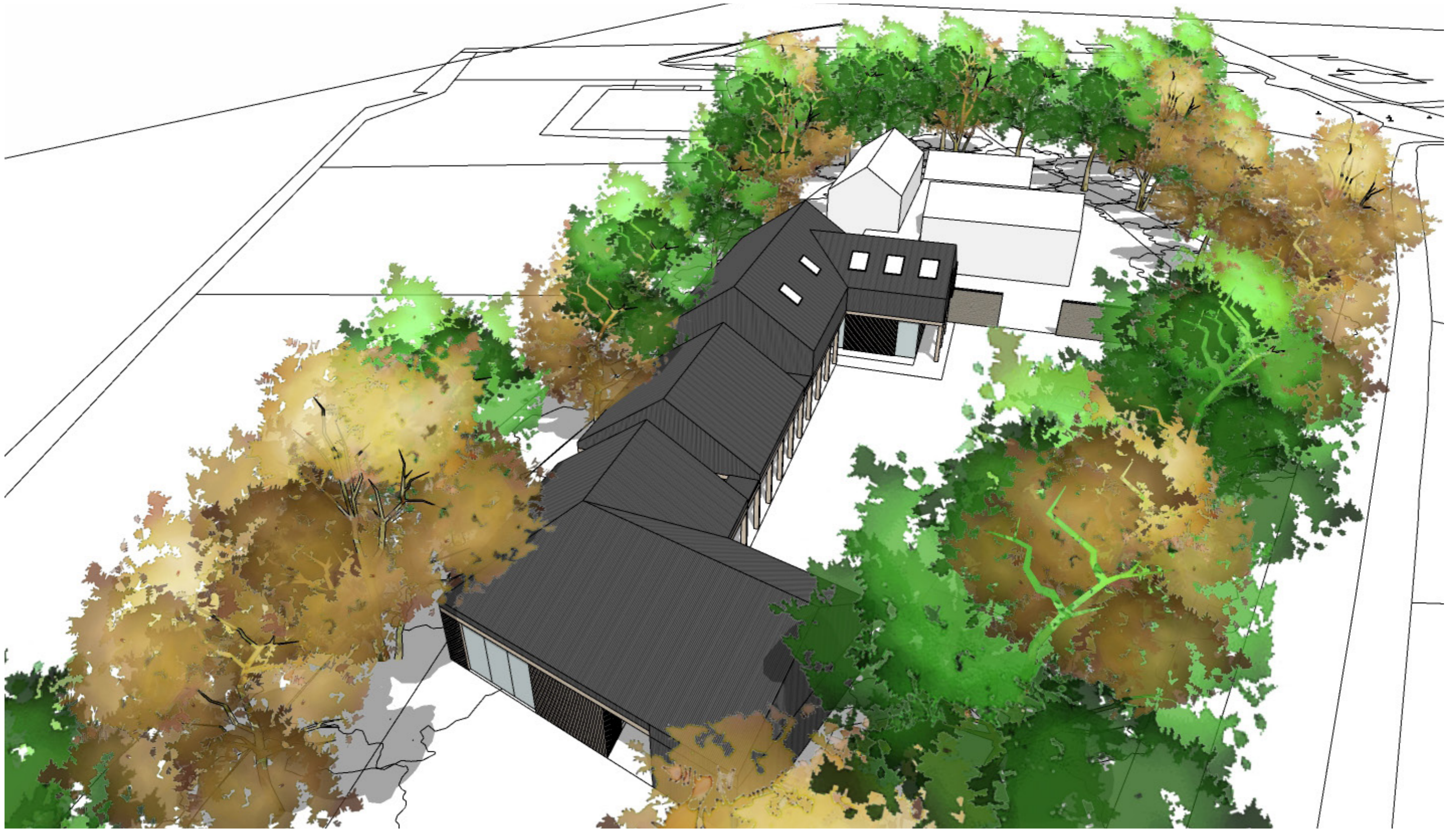
## **3.0**

### **Developed massing**



Overview 1

# KÖST



Overview 2

**KÖST**



Entrance view

**KÖST**



*View of unit 1 from cafe*

**KÖST**



*View of cafe from unit 1*

**KÖST**





*Undercroft adjacent to cafe space*

**KÖST**



*Timber and galvanised roof option*

# KÖST



*Large barn door and no overhang to unit 1*

# KÖST

---

## **4.0**

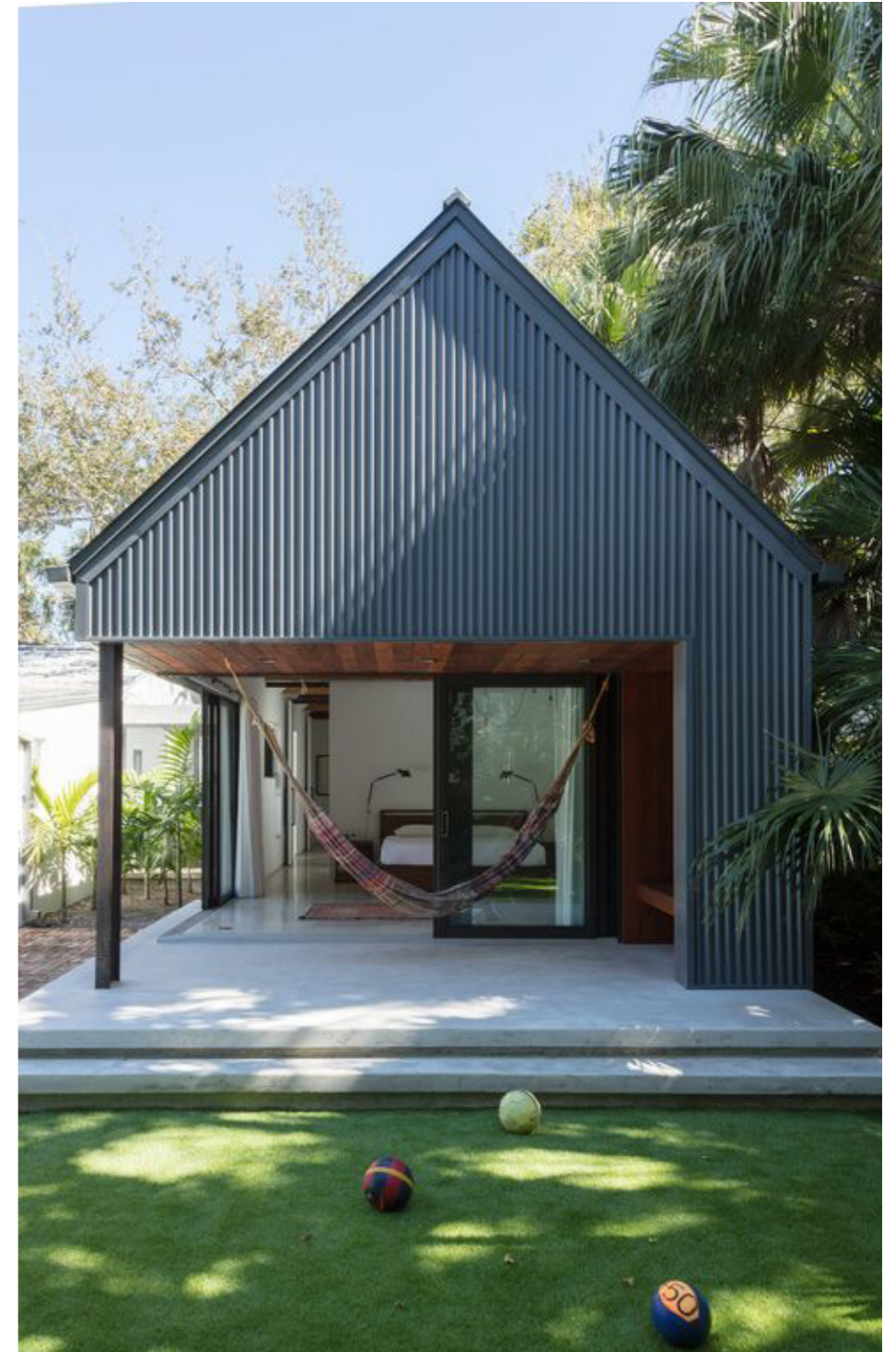
# **Workshop Precedents**



*Dark corrugated cladding*



*Dark cladding with external door*



*Structure and dark metal profiled cladding*

# KÖST



*Timber structure and corrugated roof*



*Feature openings and integrated joinery*



*Timber structure forming collonade*



*Dark timber collonade and rustic out building*

**KÖST**



*Dark cladding to wall and roof*



*Dark cladding and light timber structure*



*Large corrugated cladding and overhang*

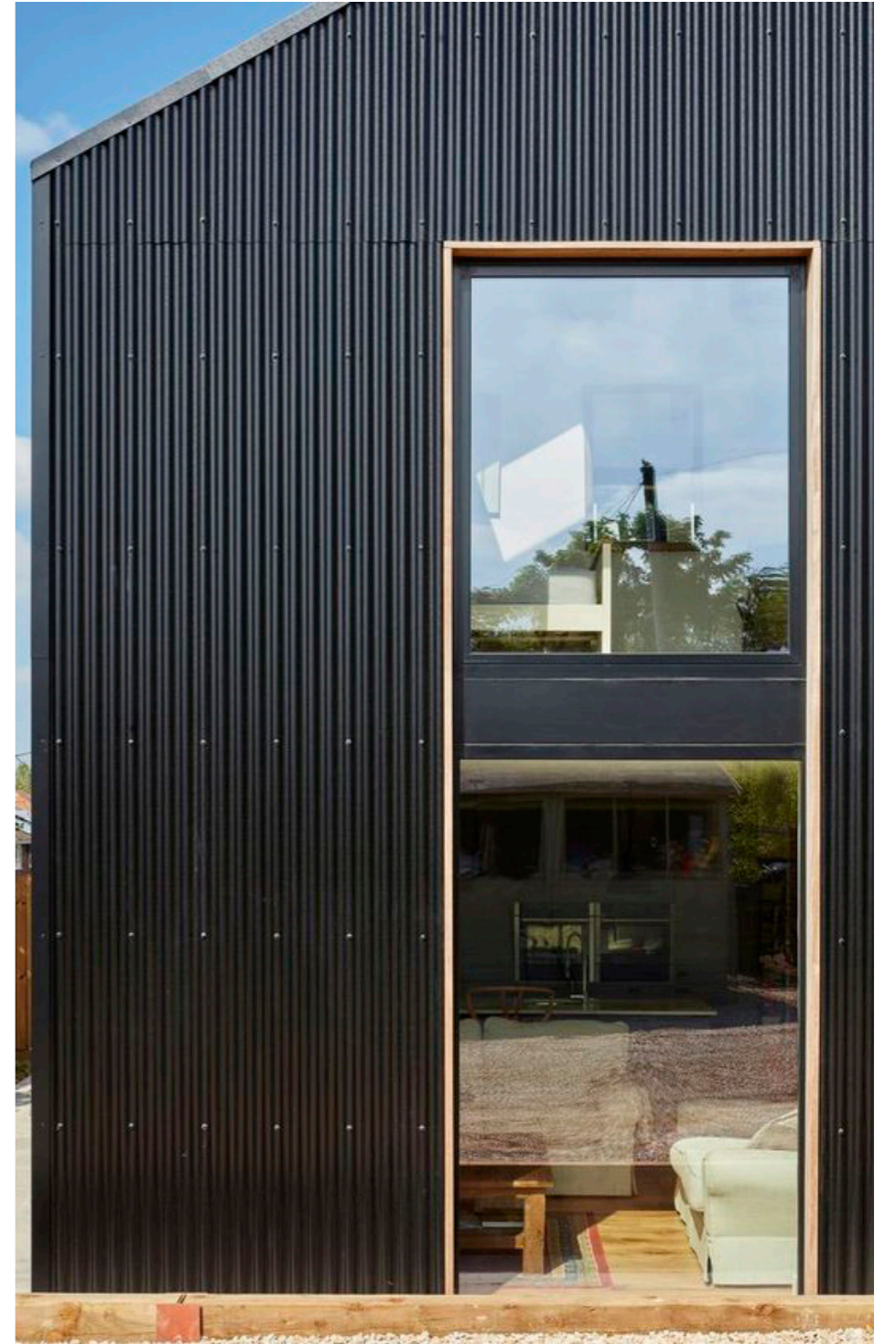
**KÖST**



*Timber collonade and metal cladding above*



*Galvanised corrugated roof with timber cladding below*



*Double height feature opening*

**KÖST**



---

## **5.0**

### **House sketch plans**

# Option 1a - Ground floor

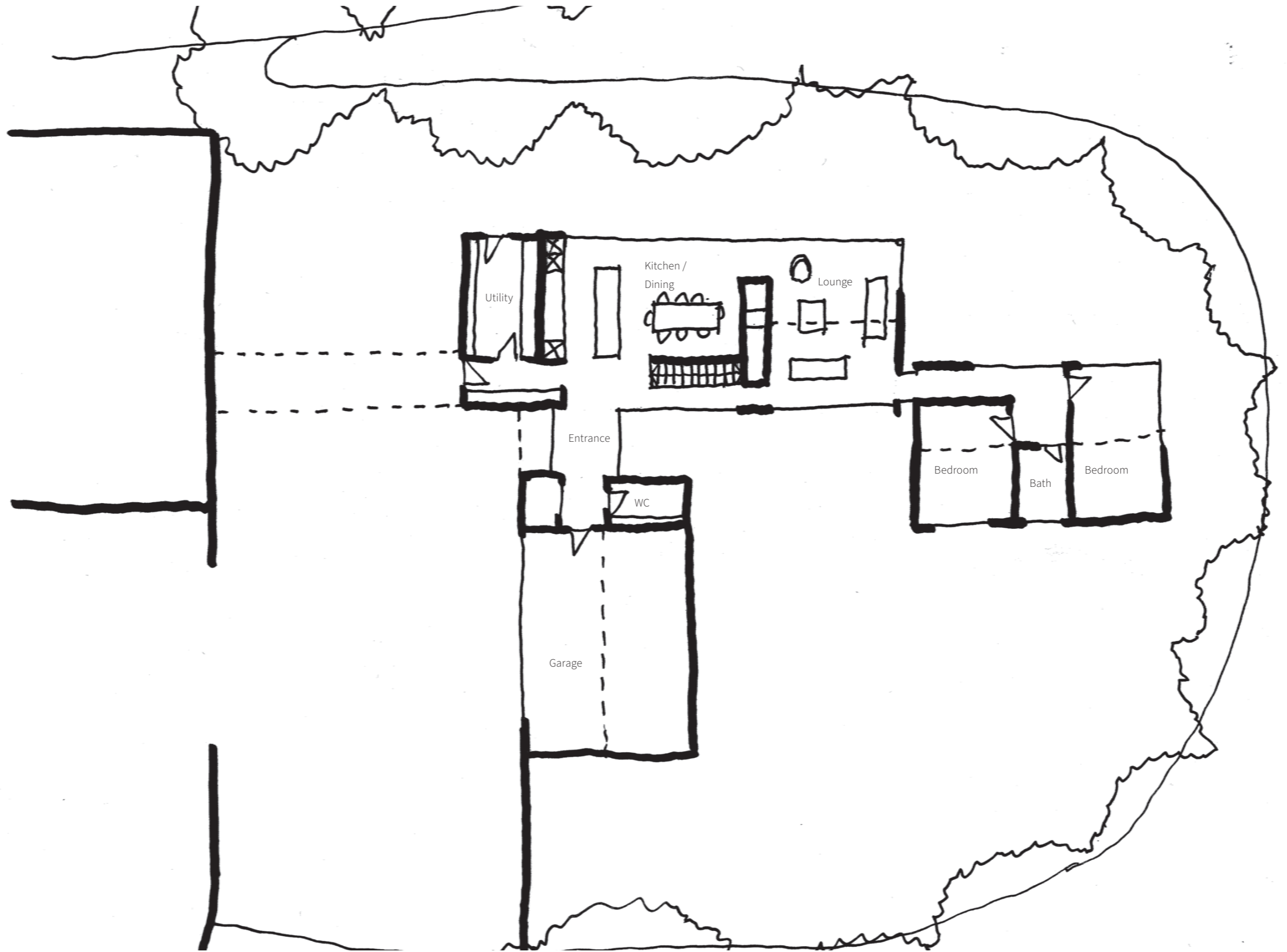
## House area

Ground floor - 177m<sup>2</sup>  
First floor - 46m<sup>2</sup>  
Total area - 223m<sup>2</sup>

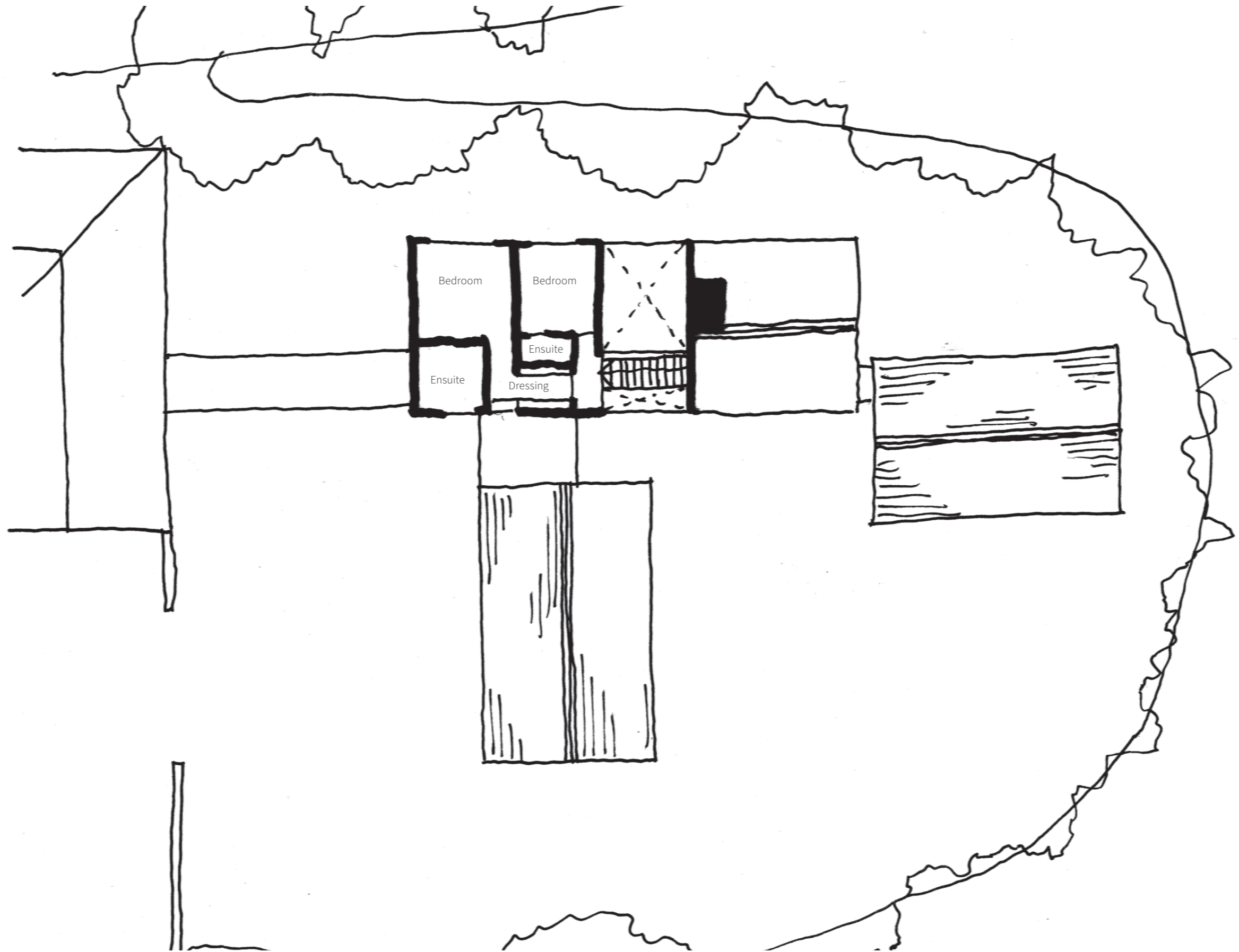
Garage - 51m<sup>2</sup>

## Cost @ £2750/m<sup>2</sup>

Dwelling - £613,250  
Garage - £89,250 @ £1750/m<sup>2</sup>



# KÖST



**KÖST**

Option 1b - Ground floor

House area

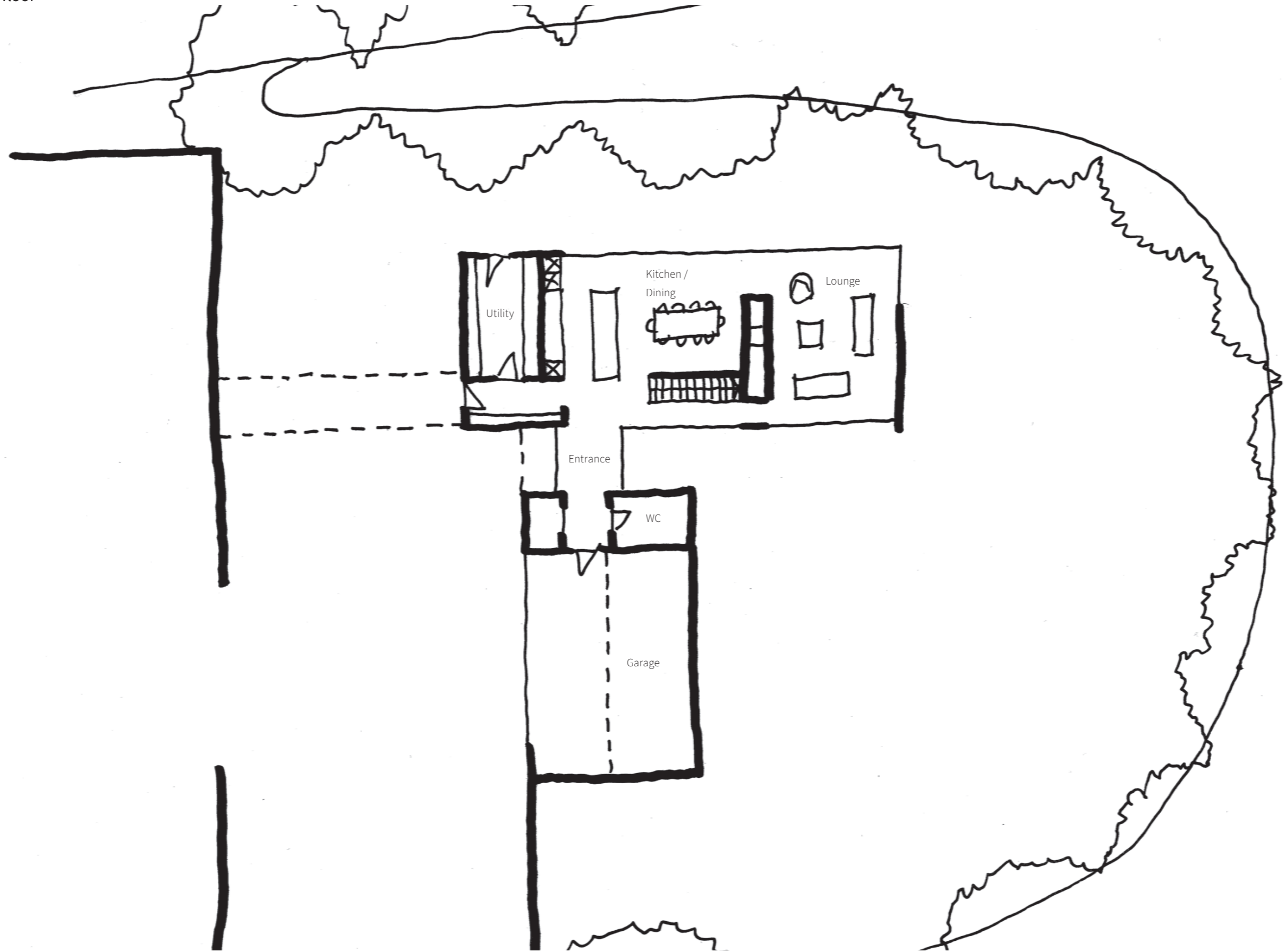
Ground floor - 120m<sup>2</sup>  
First floor - 88m<sup>2</sup>  
Total area - 208m<sup>2</sup>

Garage - 51m<sup>2</sup>

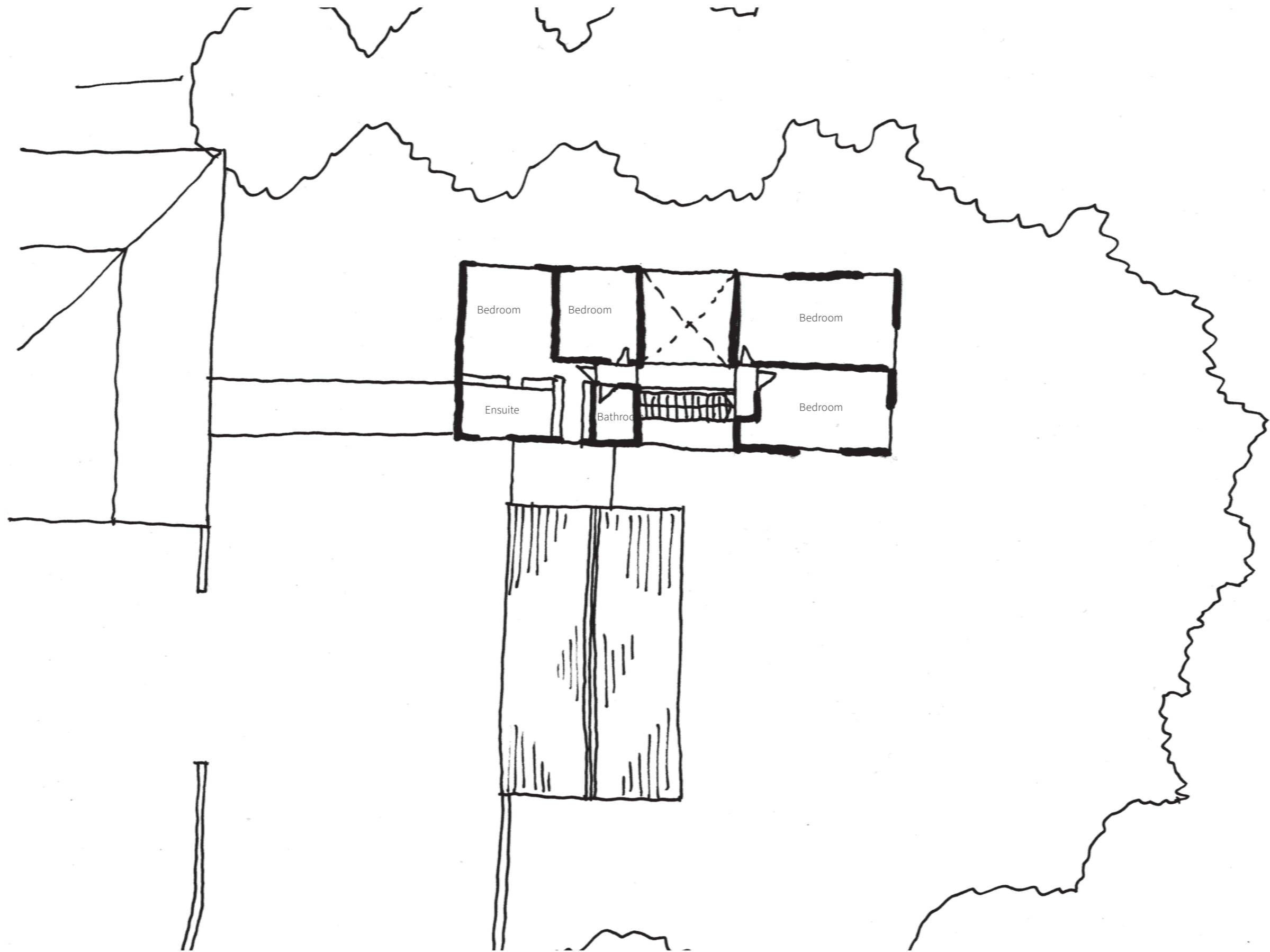
Cost @ £2750/m<sup>2</sup>

Dwelling - £572,000

Garage - £89,250 @ £1750/m<sup>2</sup>



**KÖST**



**KÖST**

Option 2 - Ground floor

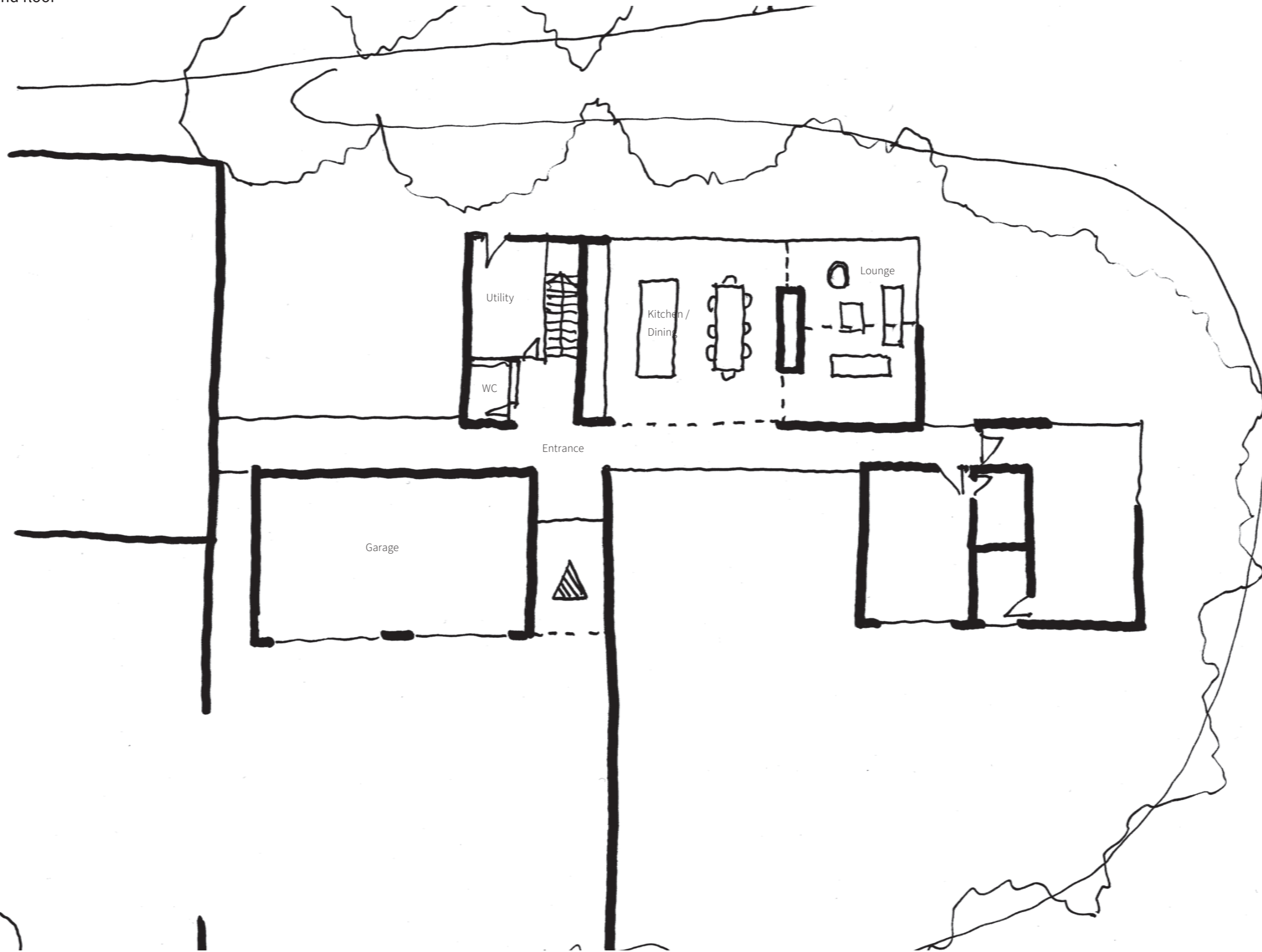
House area

Ground floor - 232m<sup>2</sup>  
First floor - 63m<sup>2</sup>  
Total area - 295m<sup>2</sup>

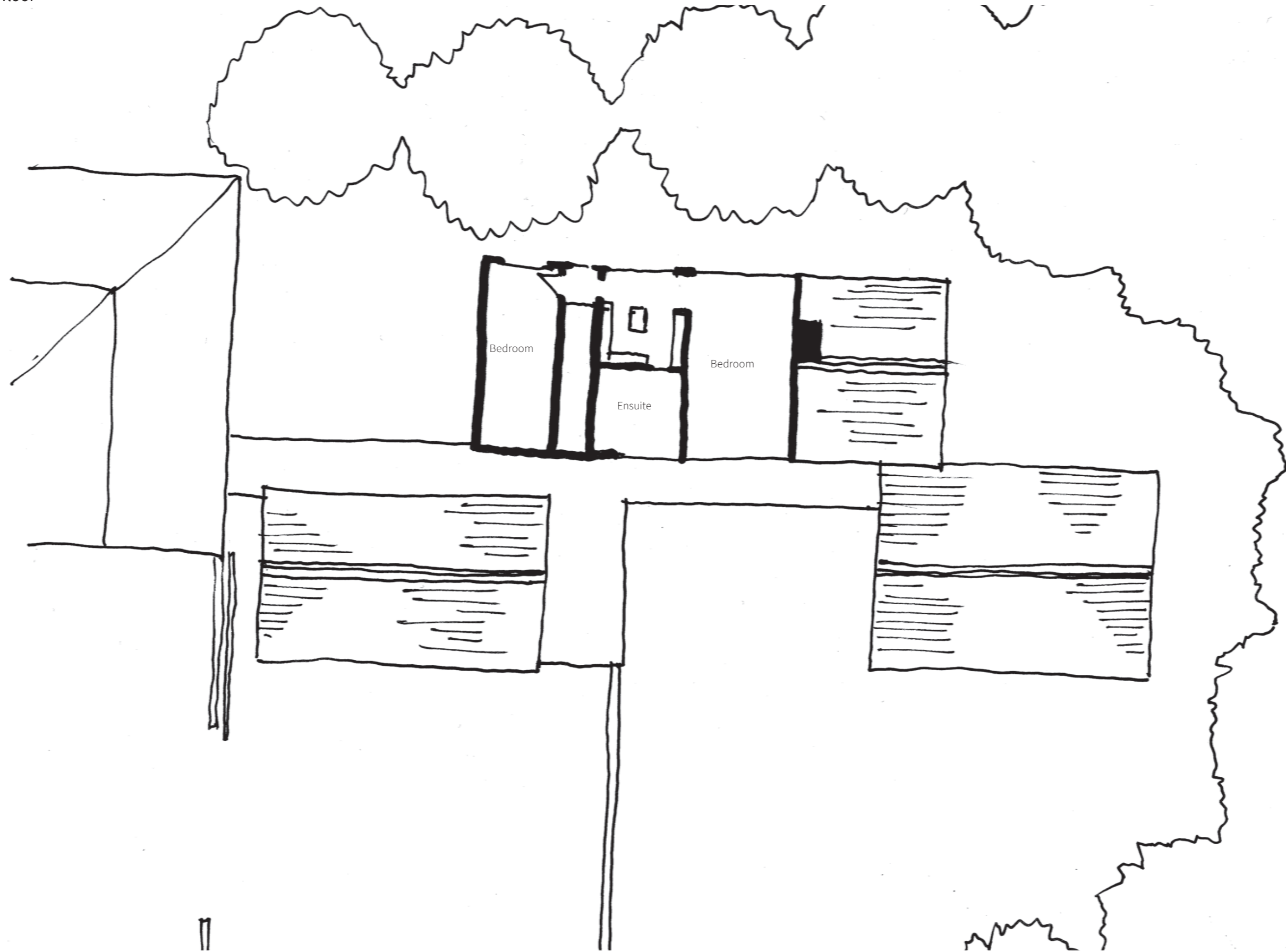
Garage - 69m<sup>2</sup>

Cost @ £2750/m<sup>2</sup>

Dwelling - £811,250  
Garage - £120,750



**KÖST**



**KÖST**